

Company Hair & Makeup updated 2016

Makeup kits \$25 (Eyeshadow, Red Lip liner, and Lip Cream) are available at the studio
All other makeup and hair supplies are available at Sally's/Walmart/Target/Smith's or similar.

Company Hair

Supplies:

- Large thick hair elastics which match your hair color
- Gel (Clear Ice – or use Got2b defiant-orange jar to smooth flyaways and freeze with Got2b Hair Spray- these 2 items do not flake!)
- Hair Spray (Got2b glued-yellow bottle)
- Regular sized and large bobby pins which match your hair
- Hair net to match your hair color (do not use the thick hair nets-it should be very thin)

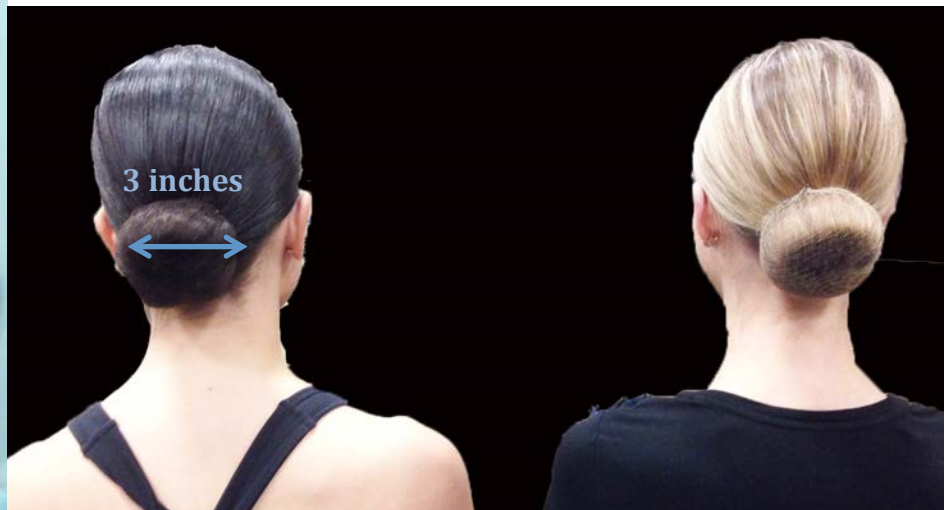
~You can start with dry or wet hair. If using Clear Ice, use LOTS of gel-enough so that your hair is nice and shiny. You should use about 2-3 handfuls of gel by the time you are done! If using Got2b defiant, just use what is necessary to smooth hair into ponytail and use the Got2b glued freeze spray to finish.

~Part your hair in the middle above your nose. It is important that the part is in the exact middle. The part should go $\frac{3}{4}$ of the way across the top of your head. Brush/comb the hair down from the part as shown in the picture (**the hair should not angle back.**) Slick your hair in to a **low ponytail** at the nape of your neck. Do not go too low or you will not have room for your bun, but do not go too high-it is a LOW bun and you should not see any hair under your bun. Make sure you use the large thick hair elastics and for thick hair use 2, 3 or even 4 elastics so it is tight. There should not be a poof in your hair and NO FLYAWAYS. It can take 4-5 tries to get it correctly slicked.

~To make your bun: You will need to shape your hair in the bun shown below. The bun is small and must be 3 inches, not smaller, not larger. If you have thick hair use the hairgami (snap bracelet.) For thinner hair, use a hair donut. Just make sure it matches your hair. Wrap and roll your hair in the hair donut until it is tight to your head. The bun must be 3 inches across (yes- you need to measure your bun 😊 and this size is quite small.) Then wrap a finely weaved hair net around the bun. You will need to wrap it 2-3 times and then secure the excess under the bun and pin. **You must use a hair net.** Secure with plenty of matching bobby or hair pins.

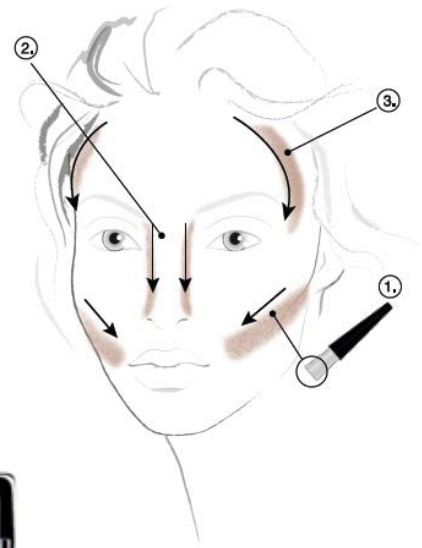
~Finish with plenty of hairspray.

Hair must be carefully slicked down towards ears with a very low bun. BUN MUST BE SMALL. No larger than 3 inches across. You must wear a matching hairnet over the bun.



Performance Makeup

- ~ Apply **Foundation** on entire face. Foundation should be slightly darker than your skin tone. Make sure to blend along jaw bone. (Powder foundation works great.)
- ~ Use **Concealer** (if needed) under eyes and an **Eye Shadow Primer** on entire eyelid. You may use concealer instead of primer.
- ~ Finish with **Powder** (unless you already used a powder foundation.)
- ~ Contour using **Bronzer** as shown in the picture. Sides of temples, nose and under cheekbones.



Using the narrow surface of the brush, sweep brush under cheek bones (1), down sides of nose (2), and around temples (3).



~Eyeshadow

Brow Bone: Use over top half of the eyelid.

Above Crease: Apply in the crease

~**Black Eyeliner** (liquid pen or gel-waterproof) Line the upper lid with black liner along the lash line out to the end of the eye and extend the liner slightly up. On the lower lash line across the bottom.

Highlight: Apply gold highlight eyeshadow on the inner corners of each eye & on the outside corners under eyeliner.

~Apply glue to **False Eyelashes** and put on along the top lashes. Get as close to the natural lashes as you can, but apply the outside corner up slightly. It helps to let the glue sit for a few seconds before you apply the lashes. (use size 110 for younger dancers and size 105 for older dancers)

~Apply **Black Mascara** to top and bottom lashes.

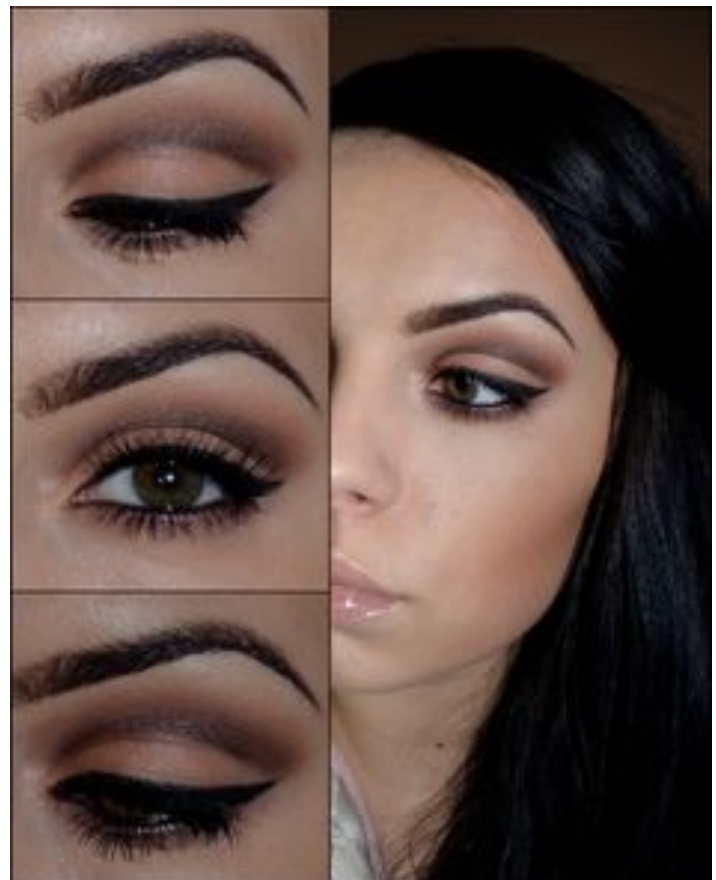
~Darken eyebrows with **Brown Pencil** or use eyebrow gel. It is important that your eyebrows are seen. Blondes should use a light brown eyebrow pencil.

~Add **Rose Colored blush** on the cheekbone.

~Line lips and fill in with **Red Lip Pencil**. Apply **Matte Lip Cream** and let it dry. Apply a 2nd coat.

Lid: Apply to bottom half of eyelid.

Crease: Use just under "Above Crease"



Helpful Hints for Hair...

Slicking hair: If you have trouble with the gel flaking, try this... Smooth Hair into low ponytail with Got2b Defiant. Once you have it smooth and into a ponytail add Got2b Glued Hair spray to spray into place. You will usually need to take out the pony tail and smooth with the hair spray into the low ponytail. Sometimes it takes 3-4 tries to get it right.



Hair donut options- keep in mind that the bun must only be 3 inches wide. If you have thin hair get a larger foam hair donut. If you have thick/long hair use the Hairagami. Whatever you use, it needs to match the color of your hair or not been seen when you make your bun.

THICK/LONG HAIR OPTION:

Hairagami- Discount Dance, The Glass Slipper (AF)



Remington Perfect Bun- (Walmart online-not sure if sold in stores)-comes in other colors.



THIN HAIR OPTION:

Mesh Hair Donut- Sally Beauty Supply notice the different color and size options.

These are only if you need to make your bun larger



THIN HAIR OPTION:

Hot Buns- Sally Beauty Supply, comes in small and larger size so you can use the best size for your hair type.



Hairnets: Use one from Sally's that is for a bun. It must match your color of hair. This style blends into your hair and is durable. You must use a hairnet. Going without is not an option.



Videos:

To wrap hair around mesh donut: <https://www.youtube.com/watch?v=pfriS1i5RUM>

To understand how to get the hair really smooth. This video is not the correct bun or low enough ponytail but is great for slicking the hair. <https://www.youtube.com/watch?v=S-bXrKWw8vY>

Helpful Hints for Makeup...

Make sure to make the eye shadow is dark enough, especially in the crease. The crease should be DARK brown. Also do not forget to add the gold highlights.

Lips-line the lips in red and fill in. Then add 2-3 coats of the lip crème. It helps to put on a lip primer before the liner.

Lashes-any lashes from Walmart, Target or Sally's is fine. Use size 110 for younger dancers and 105 for older dancers. Trim the edges if they are too long.

Video for how to apply eyelashes: <https://www.youtube.com/watch?v=O9jIAbk5Cpo>

